

London House | Avenue Road | NW8

Asking Price **£4,950,000** | Subject to contract



A spectacular Penthouse apartment situated on the 9th floor atop this prestigious, portered development located on St John's Wood's premier thoroughfare. For sale for the first time in over 50 years, this apartment offers an incoming purchaser an extremely rare opportunity to acquire and create a stunning home or pied-a-terre.

Offering far reaching London Skyline views from all the principle rooms and an abundance of light, the property is entered by way of direct passenger lift access and comprises 4 double bedrooms, 3 reception rooms, 3 bathrooms, and benefits from allocated underground parking.

London House is conveniently located adjacent to Regent's Park and all local amenities of St John's Wood and Primrose Hill. St John's Wood High Street with its fashionable shops, cafes, eateries and boutiques is just a short walk away.



Accommodation

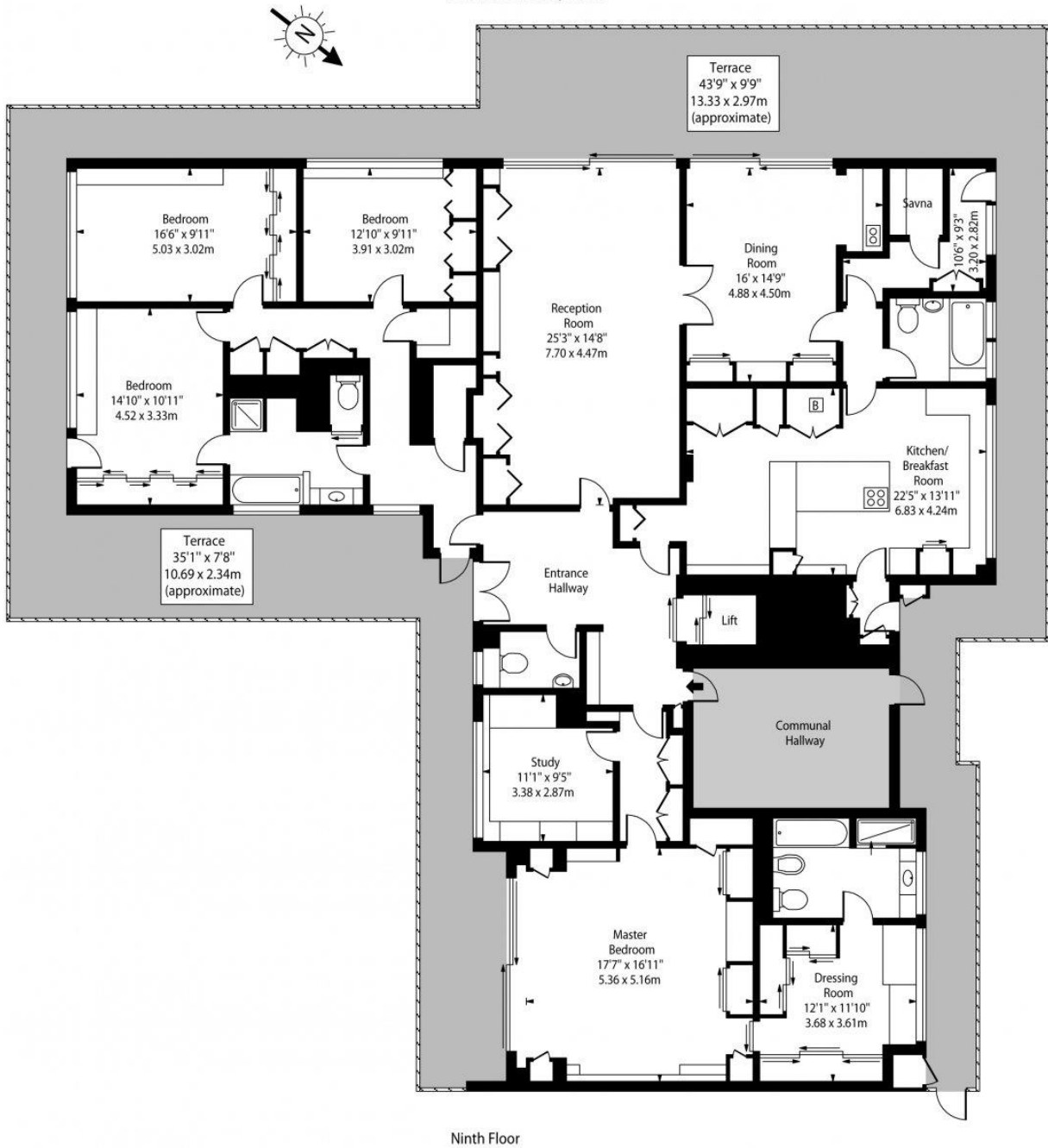
Development opportunity • Direct lift access • Underground parking • 24-hour porter

Amenities

• Porterage • Lift • CCTV • Entry Phone • Terrace • Balcony • Underground Parking



London House,
Avenue Road, NW8



Approx Gross Internal Area 2807 Sq Ft - 260.77 Sq M

(Excluding Communal Hallway & Lift)

For Illustration Purposes Only - Not To Scale Floor Plan by www.nogaphotostudio.com Ref: No.40525

This floor plan should be used as a general outline for guidance only. Any intending purchaser or lessee should satisfy themselves by inspection, searches, enquiries and full survey as to the correctness of each statement. Any areas, measurements or distances quoted are approximate and should not be used to value a property or be the basis of any sale or let.

